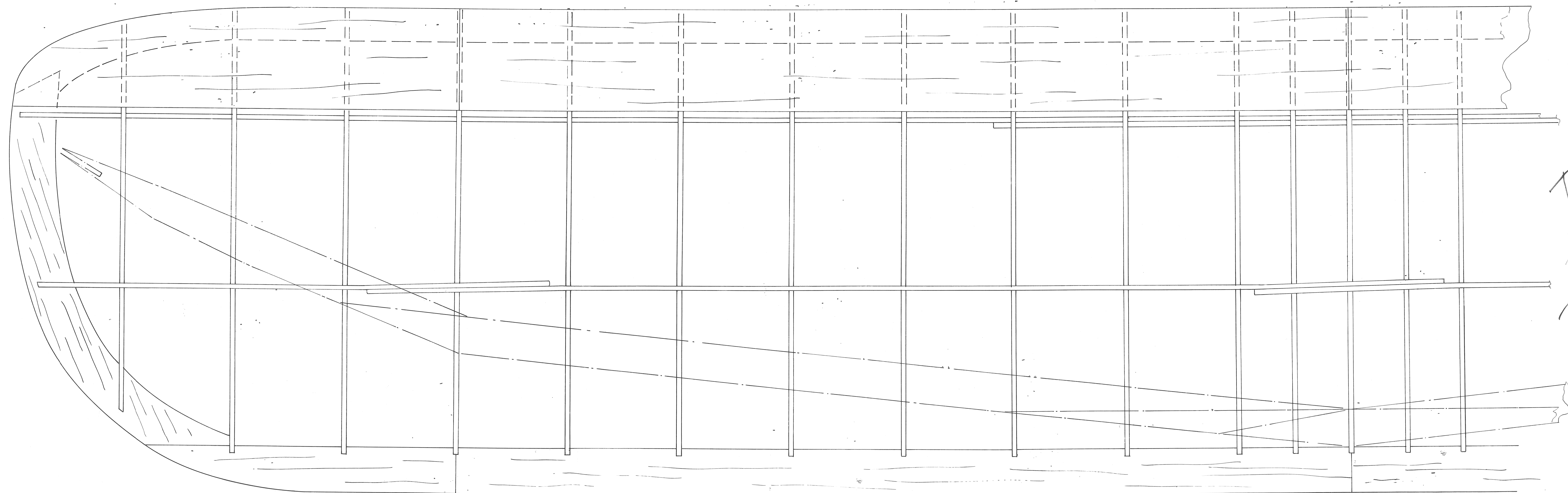


Flown AT 1941 CHICAGO NAT'S



Buzzard  
Bombshell II  
DESIGNED BY JOSEPH KONEFES  
January 1941

CONSTRUCTION SIMILAR TO 1940 BUZZARD BOMBSHELL  
Flown AT 1941 CHICAGO NAT'S

ELEVATOR FRONT SPAR

WING REAR SPAR

RUDDER FRONT SPAR

RUDDER REAR SPAR

1/8" SHEET

SUPER CYCLONE  
5° DOWNTHRUST  
3° LEFT THRUST

CG

BIRCH ENGINE MOUNTS

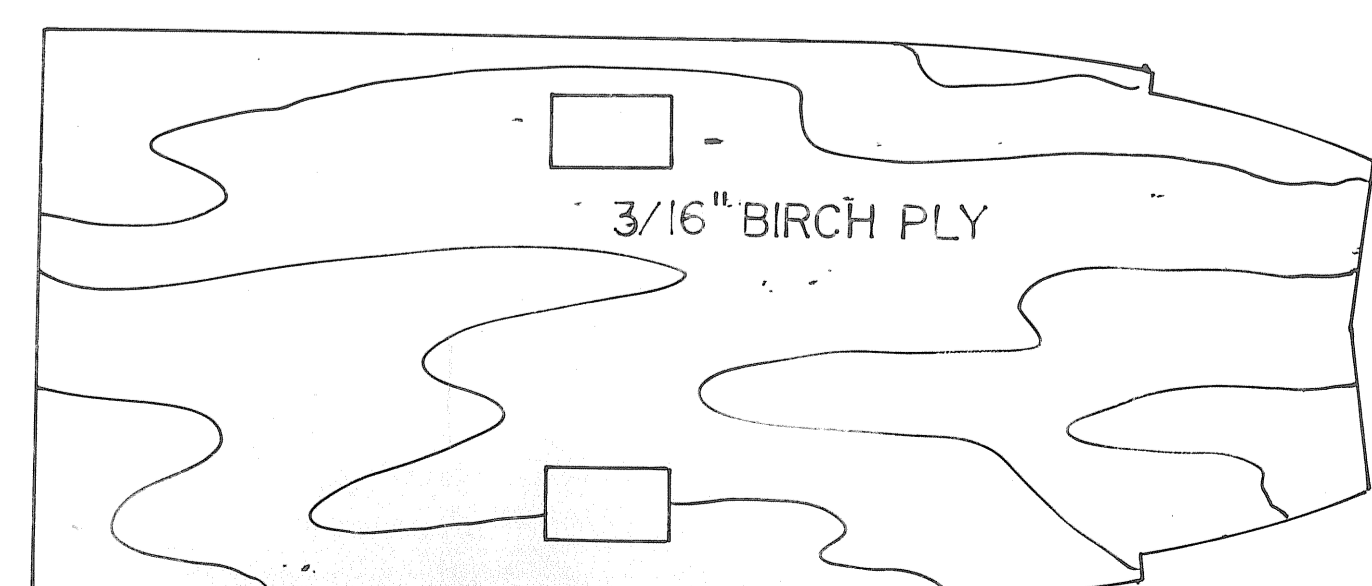
1/8" SHEET Balsa

1/8" SHEET Balsa

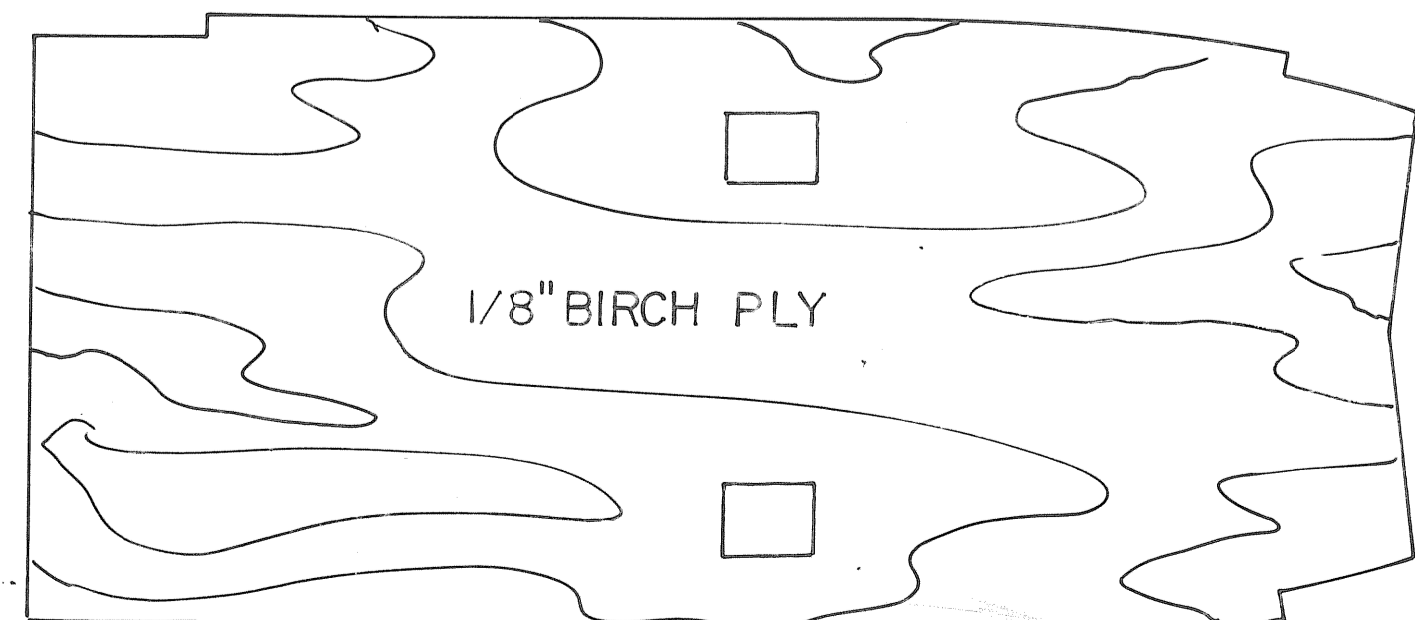
1/8" SQ.

(3) 1/8" X 3/8" STRINGERS

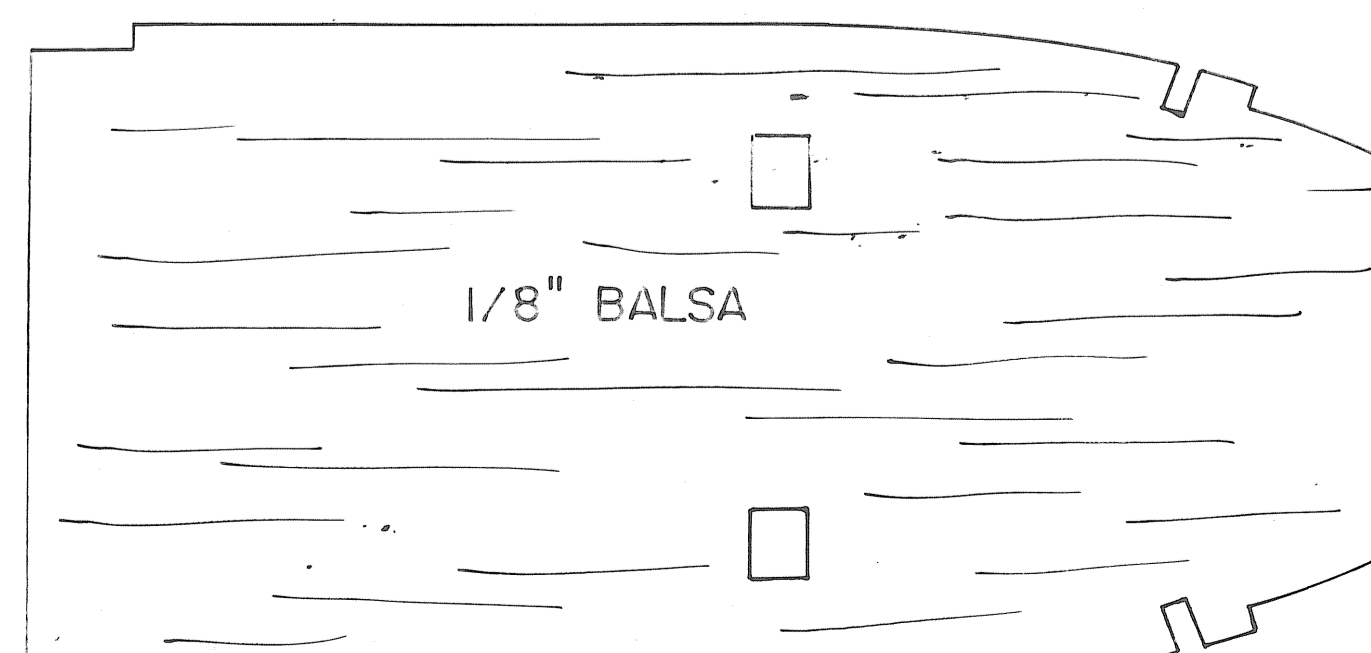
FRONT OF RUDDER OFFSET  
7/16" FOR RIGHT TURN



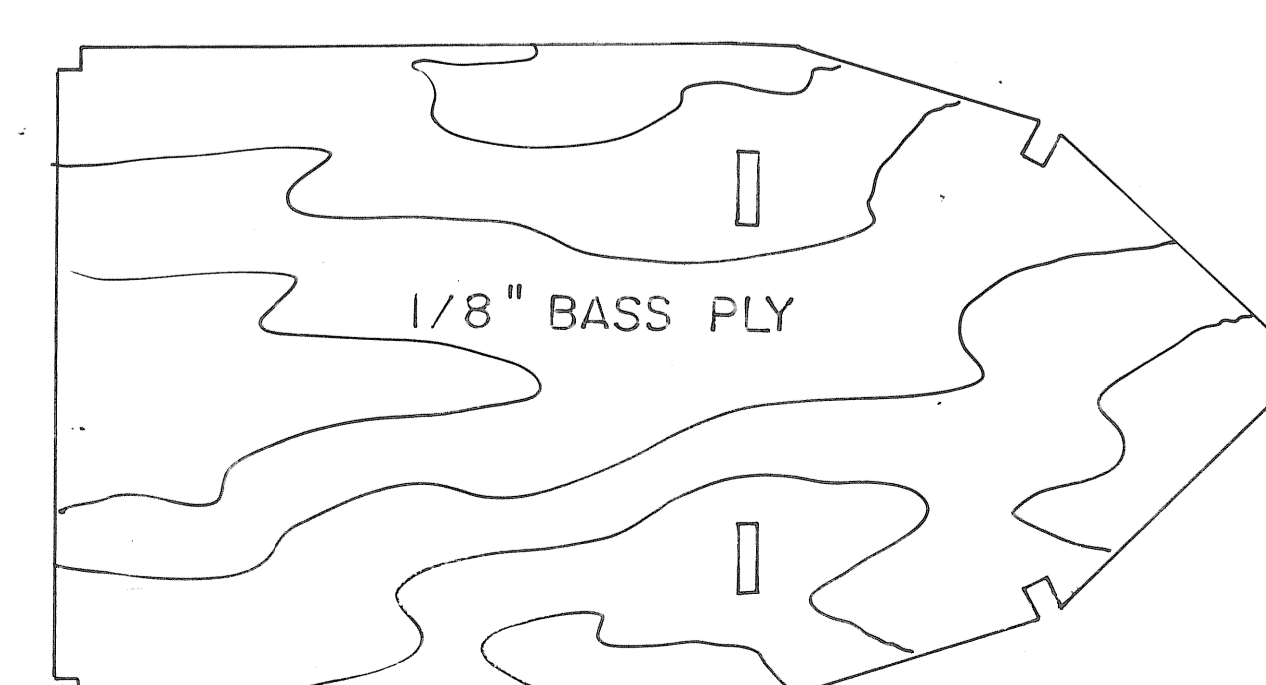
3/16" BIRCH PLY



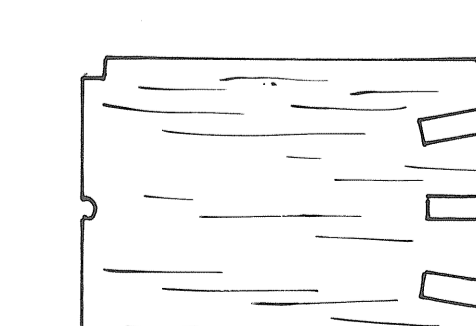
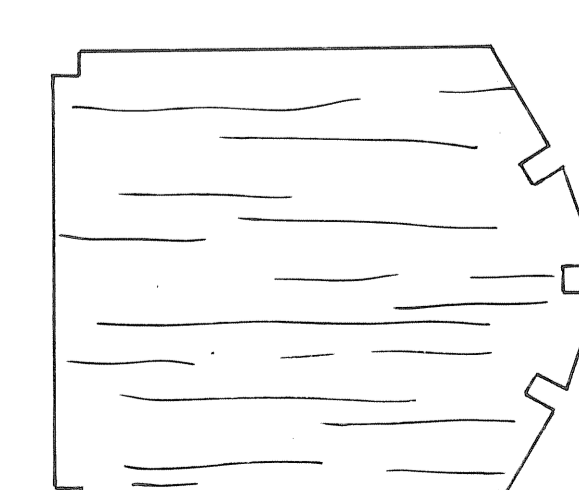
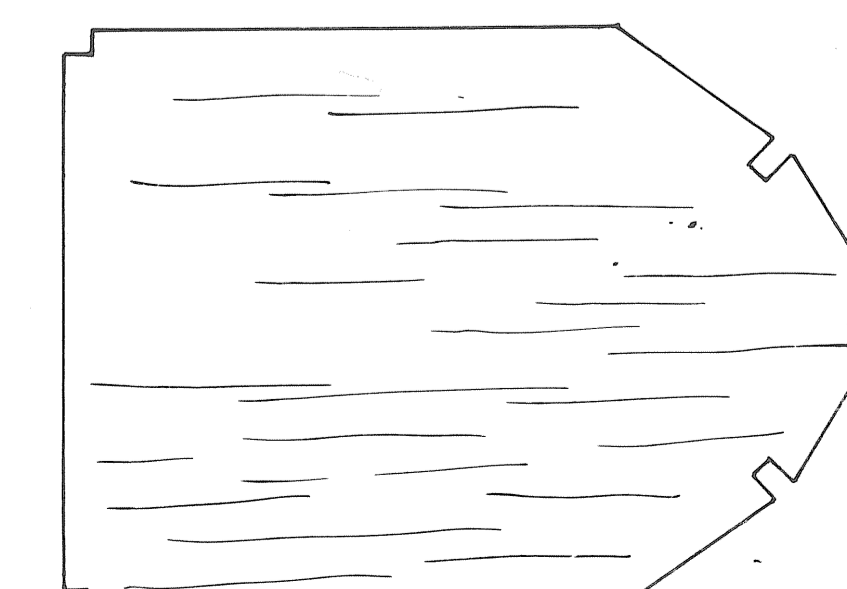
1/8" BIRCH PLY



1/8" Balsa



1/8" BASS PLY



THIS PLAN AND  
PARTS LIST FROM JOE KONEFES  
6/18/2004